

8

7

6

5

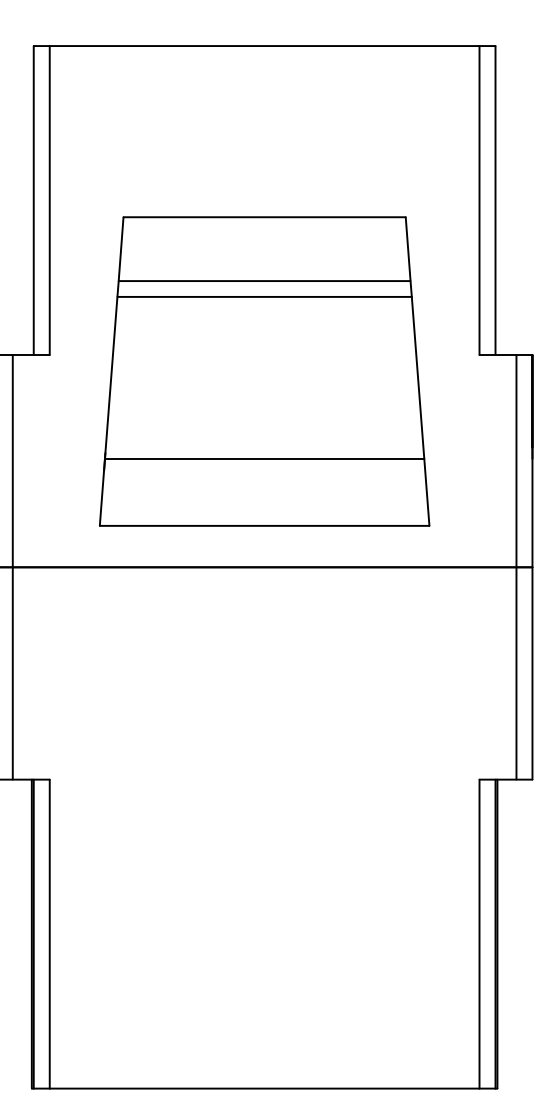
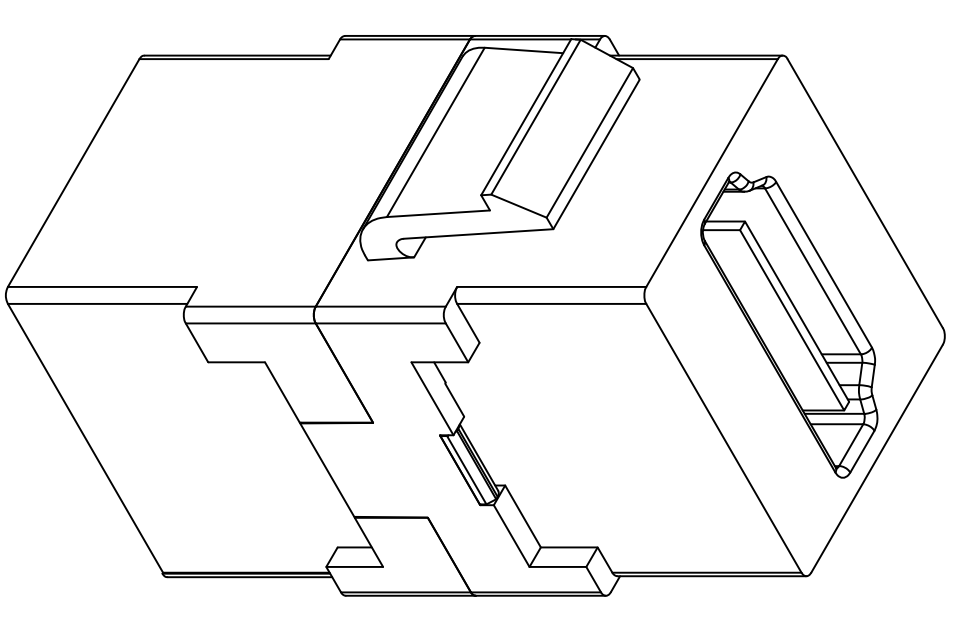
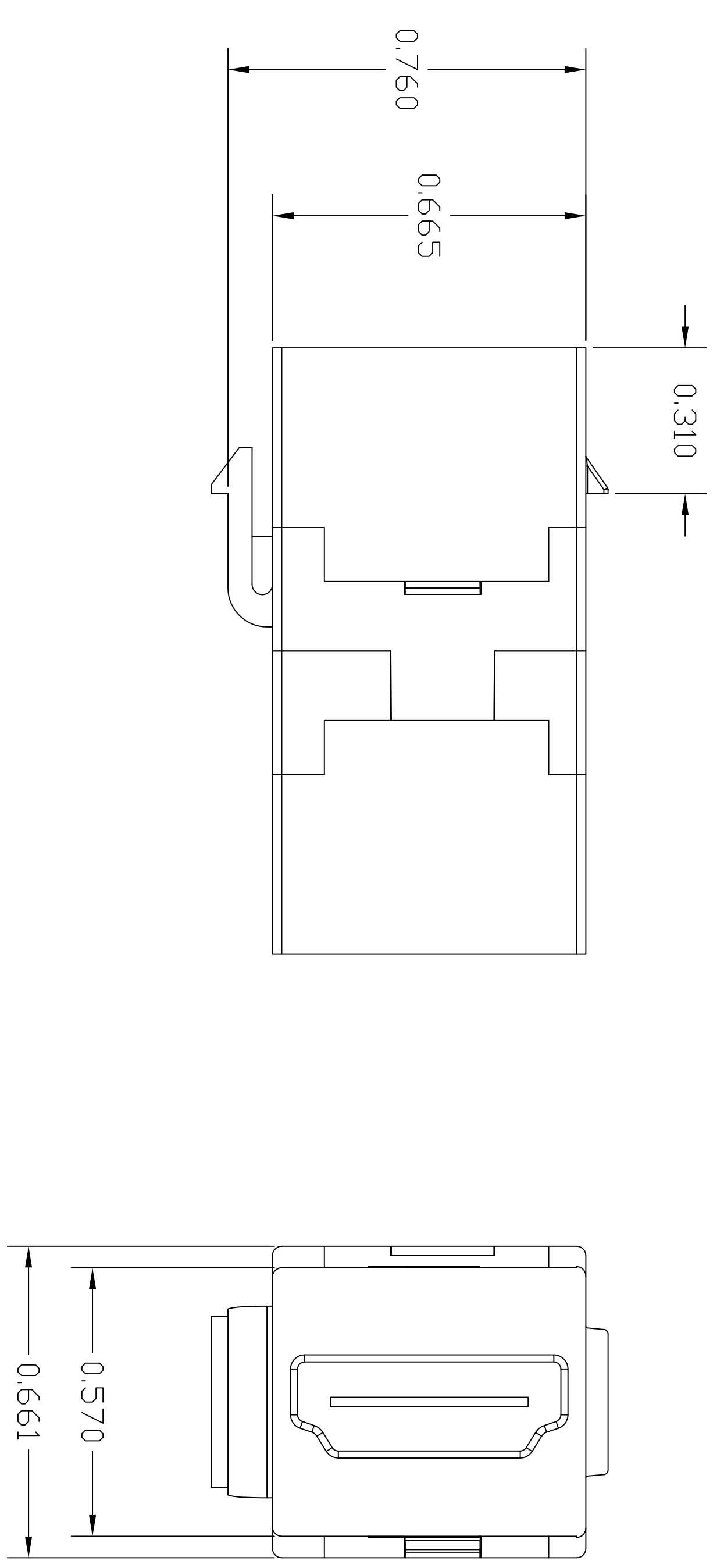
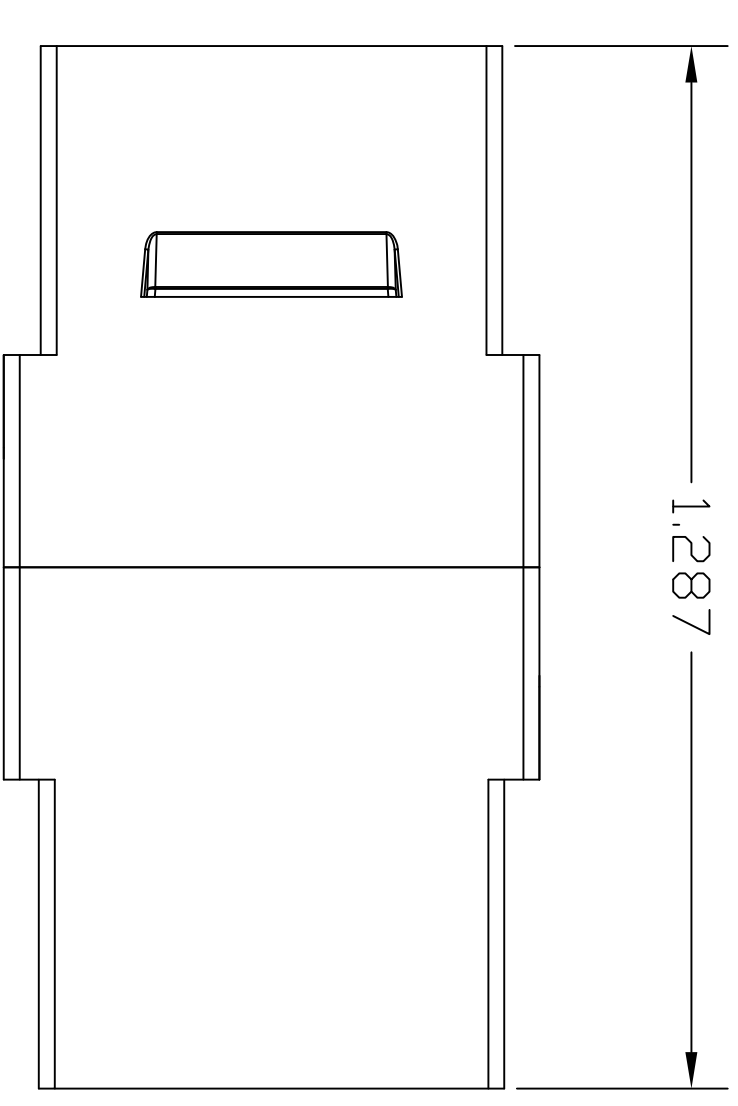
4

3

2

1

CATALOG NUMBER	COLOR	DESCRIPTION
SFHCI4W	WHITE	HDMI 1.4 F/F COUPLER
SFHCI4BK	BLACK	HDMI 1.4 F/F COUPLER



- NOTES:
1. COMPLIES WITH HDMI 1.4 SPECIFICATION.
 2. HOUSING IS MADE OF UL-94 V0 RATED THERMOPLASTIC.
 3. SPECIFICATIONS SUBJECT TO CHANGE WITHOUT PRIOR NOTICE.

REV.	ECN	DATE	DESCRIPTION	CHG BY	APPD BY
1	17861	3/8/12	INITIAL RELEASE	CC	

Created on AUTOCAD		DIMENSIONING AND TOLERANCE PER UNLESS OTHERWISE SPECIFIED, DIMENSIONS ARE IN INCHES (MM). TOLERANCES .XX = ±.01 (.25) .XXX = ±.005 (.127) ANGLE TO ±.1°	
PROJECT REFERENCE: 011-12		IN ACCEPTING OUR DRAWINGS, BLUEPRINTS, OR SUPPORTING DOCUMENTATION FOR QUOTATION OR OTHER PURPOSES, YOU AGREE NOT TO DISCLOSE TO OTHERS THE CONTENTS HEREIN, AND THAT YOU WILL MAKE NO USE OF SAME WITHOUT PERMISSION	
DRAWN BY: C. GRIBBLE 3/8/12		HUBBELL Hubbell Premise Wiring HUBBELL INCORPORATED (Delaware) 14 Lord's Hill Road, Stoughton, Connecticut 06378	
CHECKED BY: APPROVED BY:		TITLE: HDMI 1.4 COUPLER FEMALE TO FEMALE	
SIZE: DRAWING NO. D HWS14043C		SCALE: 1/1 SHEET 1 OF 1	
		REV. 1	